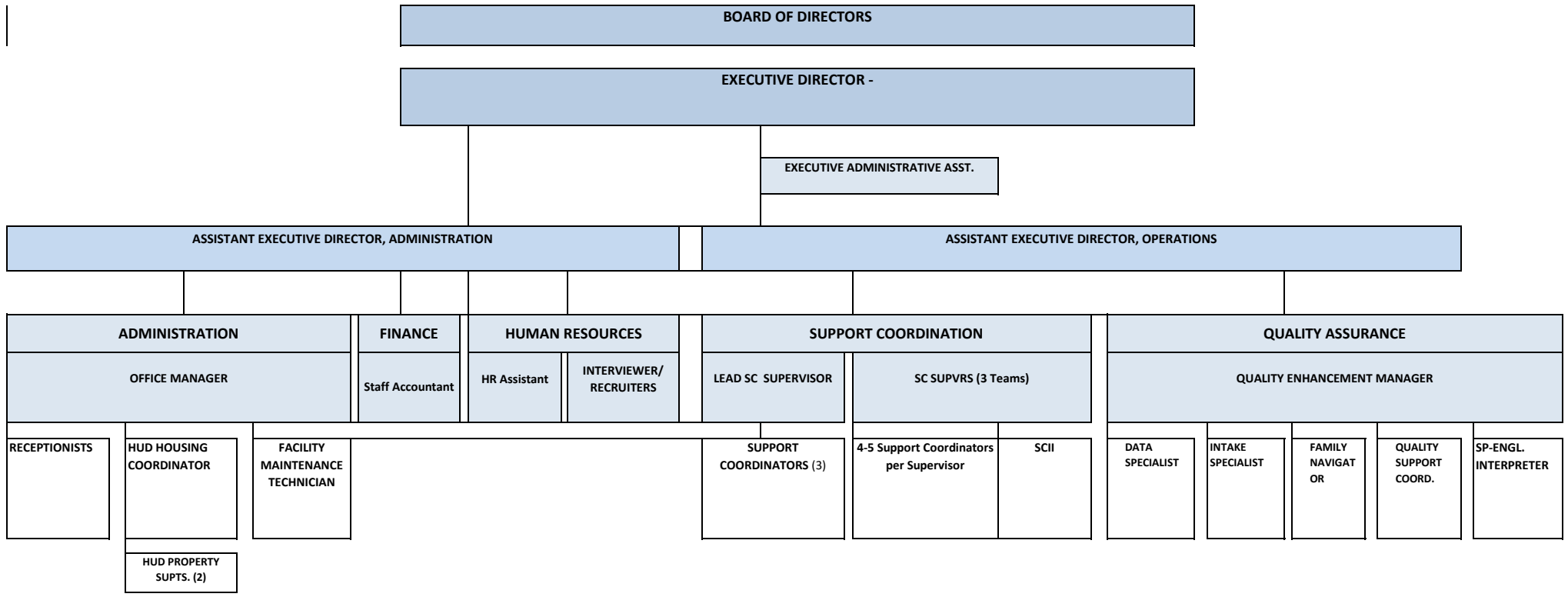


PCS Organizational Chart



BOARD OF DIRECTORS

EXECUTIVE DIRECTOR -

EXECUTIVE ADMINISTRATIVE ASST.

ASSISTANT EXECUTIVE DIRECTOR, ADMINISTRATION

ASSISTANT EXECUTIVE DIRECTOR, OPERATIONS

ADMINISTRATION

FINANCE

HUMAN RESOURCES

SUPPORT COORDINATION

QUALITY ASSURANCE

OFFICE MANAGER

Staff Accountant

HR Assistant

**INTERVIEWER/
RECRUITERS**

LEAD SC SUPERVISOR

SC SUPVRS (3 Teams)

QUALITY ENHANCEMENT MANAGER

RECEPTIONISTS

**HUD HOUSING
COORDINATOR**

**FACILITY
MAINTENANCE
TECHNICIAN**

**SUPPORT
COORDINATORS (3)**

**4-5 Support Coordinators
per Supervisor**

SCII

**DATA
SPECIALIST**

**INTAKE
SPECIALIST**

**FAMILY
NAVIGAT
OR**

**QUALITY
SUPPORT
COORD.**

**SP-ENGL.
INTERPRETER**

**HUD PROPERTY
SUPTS. (2)**