



# PROGRESSIVE COMMUNITY SERVICES

[www.progressivecommunityservices.com](http://www.progressivecommunityservices.com)

## WHO WE ARE

Progressive Community Services is the Senate Bill 40 Board in Buchanan County. PCS is governed by a nine-member Board of Directors which is appointed by the Buchanan County Commission. In 1978 the Buchanan County voters approved a tax levy on both personal and real property, to support local citizens with developmental disabilities.

## WHAT WE DO

PCS provides tools and resources to help people with developmental disabilities and their families navigate through all life stages within the context of the family.



**PROGRESSIVE  
COMMUNITY SERVICES**



**Colette Canchola**  
Family Navigator

1620 North Woodbine Rd,  
St. Joseph MO 64506  
P: 816-364-3827 ext.1149  
F: 816-671-1190

email: [ccanchola@sb40pcs.com](mailto:ccanchola@sb40pcs.com)

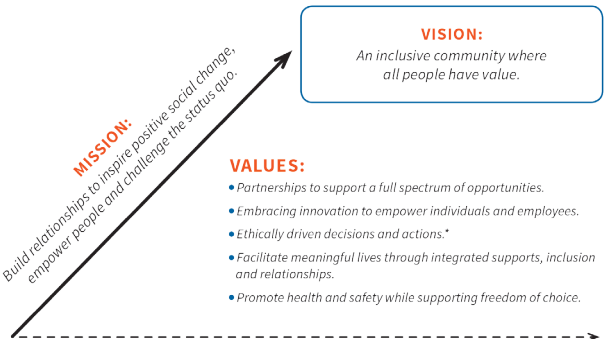
[www.progressivecommunityservices.com](http://www.progressivecommunityservices.com)

# How the Family Navigator Can help

- » Connect you with a mentor, someone who has been there.
- » Address immediate needs without eligibility determination.
- » Provide information about community resources.
- » Develop advocacy skills.
- » Assist with development in building your LifeCourse portfolio.
- » Facilitate Good Life Group

## Good Life Groups Provide:

Empowering opportunities for people to come together to create their own vision and develop a path for their good life. These groups are interactive and thought provoking, with time to share with others as well as work alone.



[www.progressivecommunityservices.com](http://www.progressivecommunityservices.com)

